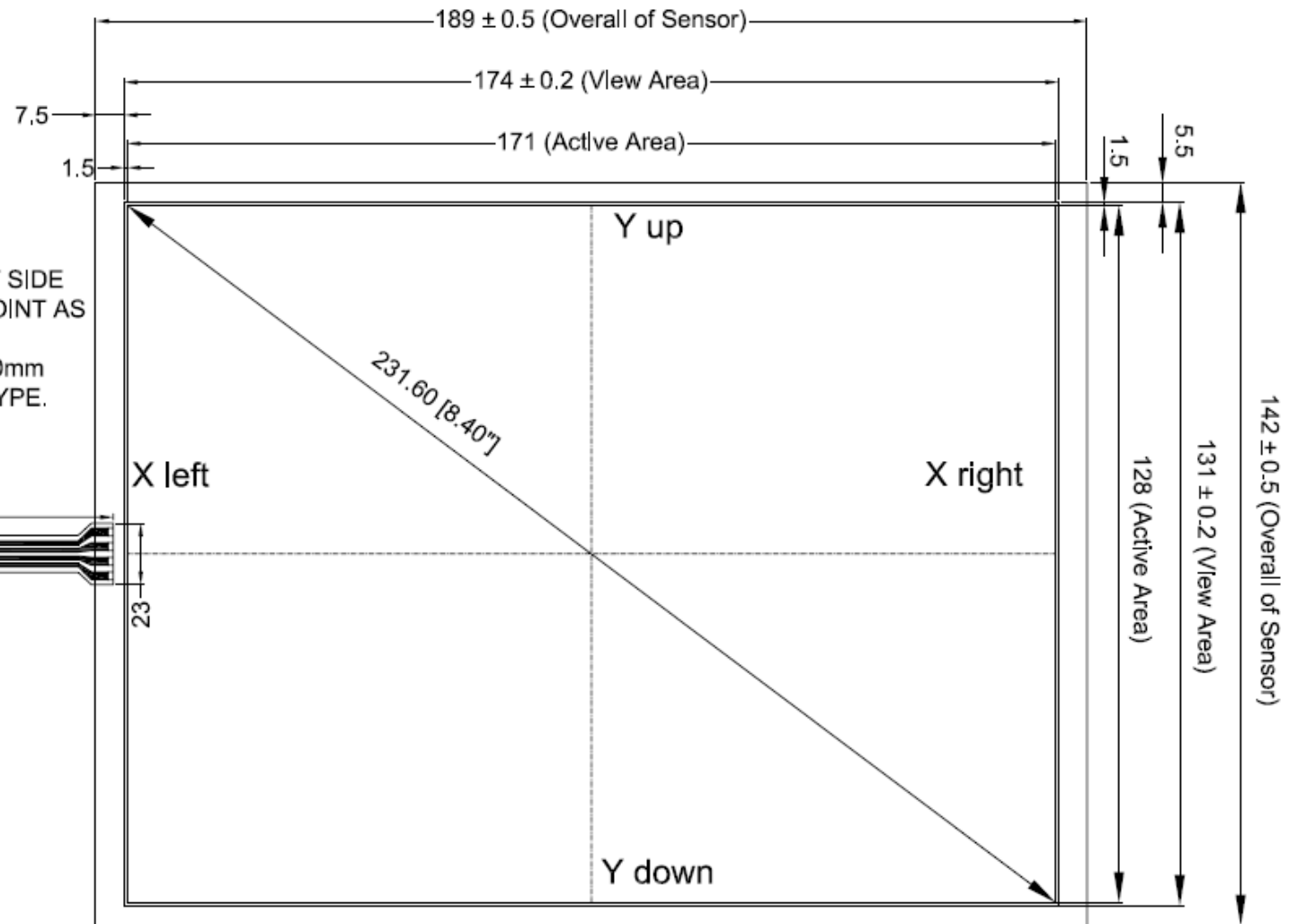
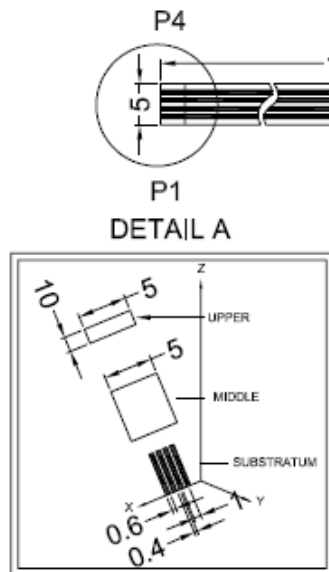



CONNECTOR PINOUT	
PIN NO	ASSIGNMENT
1	Y down
2	X left
3	Y up
4	X right

NOTE:

1. CABLE IS ATTACHED TO THE LEFT SIDE OF TOUCH PANEL AT CENTER POINT AS SHOWN.
2. FPC TAIL CONNECTOR: PITCH 1.00mm
3. ITO FILM IS ANTI-NEWTON RING TYPE.



瞄準科技有限公司 AIM TOUCH TECHNOLOGY CO.,LTD.	DATE : 2010/01/04	Part Number	ITO Film Type	Glass Type	Glass Thickness	Finished Part Thickness
	 www.aimtouch.com	MODEL : AIM-4R-0840-A03	AIM-4R-0840-A03-G1N	ANTI GLARE	General	1.1mm
AIM-4R-0840-A03-G2N			ANTI GLARE	General	1.8mm	2.1mm±0.2
AIM-4R-0840-A03-G3N			ANTI GLARE	General	2.8mm	3.1mm±0.2

NOTE : All indications are the millimeters.