

21.5" inch Embedded Touch Monitor

Products application :

- POS Terminal
- Industrial PC
- Kiosk
- Gaming
- Medical apparatus
- Personal computer
- Mobile GPS
- Office automation
- Security system of the house
- Car-mounted amusement
- Military equipment
- Communicate



21.5" inch Embedded Touch Monitor

Display Specifications :

| | |
|-------------------|--|
| Active Area | 476 × 268 mm |
| Pixel Pitch | 0.24825 × 0.24825 mm |
| Brightness | 250 cd/m ² |
| Contrast Ratio | 3000 : 1 |
| Resolution | 1920 x 1080 (Full HD) |
| Viewing Angle | L/R 178° ; U/D 178° |
| Response Time | 18 ms (Tr + Tf) |
| Display Colors | 16.7M |
| Display Modes | 640×480 ; 800×600 ; 1024×768 ; 1280×720 ; 1280×800 ; 1280×1024 ; 1366×768 ; 1440×900 ; 1680×1050 ; 1920×1080 |
| Signal input | VGA ; Audio ; DVI |
| Mini-Audio out | 1W (8Ω) × 2 |
| OSD Keyboard | ⊙ Menu/Select ⊙ - ⊙ + ⊙ Auto/Exit ⊙ Power |
| Power Source | DC 12V ; ≤19w ; Standby ≤1w |
| Power Consumption | |
| Storage | -20~60°C ; 0~50°C |
| Operation | |
| VESA | 75×75 or 100×100 mm |
| Casing Colors | Black |
| Casing Size | 546 × 337 × 47 mm ; 5.5 kg (W×H×D) |
| Weight | |
| Carton | 600 × 205 × 50 mm ; 7.45 kg (W×H×D) |
| gross weight | |



Touch Feature :

| | |
|------------------|---|
| Input Method | Finger, gloved hand, or stylus activation |
| Activation Force | ≥ 50g |
| Linearity | ≤ 1.5% |
| Surface | ≥ 3H |
| Life Time | ≥ 35,000,000 |
| Application | Writing and Signature Capture Capability |
| PC Link | USB or RS232 |

Software Feature :

| | |
|------------------|---|
| Calibration | Fast full oriental 4 points position |
| Compensation | Edge compensation. Accuracy 25 points linearity compensation |
| Draw Test | Position and linearity verification |
| Controller | Support multiple controllers |
| Languages | English · Simple Chinese · Traditional Chinese · Japanese · French · German · Spanish · Korean · Arabic · Czech · Danish · Dutch · Greek · Hungarian · Italian · Norwegian · Russian · Polish · Portuguese · Slovenian · Swedish · Thai · Turkish |
| Mouse Emulator | Right / left button emulation. Auto Right / left Click (PDA function) |
| Touch Style | Drawing a Mode · button a Mode · Touch Off/ on Switch |
| Double Click | Configurable double click speed · Configurable double click area |
| Sound Modes | No sound · Touch down · Touch up |
| COM Port Support | COM1 ~ COM255 for Windows and Linux COM1 ~ COM8 for MS- DOS |
| Display Support | display rotation · Support multiple monitors |
| Support O.S | All Windows-32 bit O.S Windows7-8-10 ; XP-64 bit O.S MS-DOS ; All Linux ; MAC |

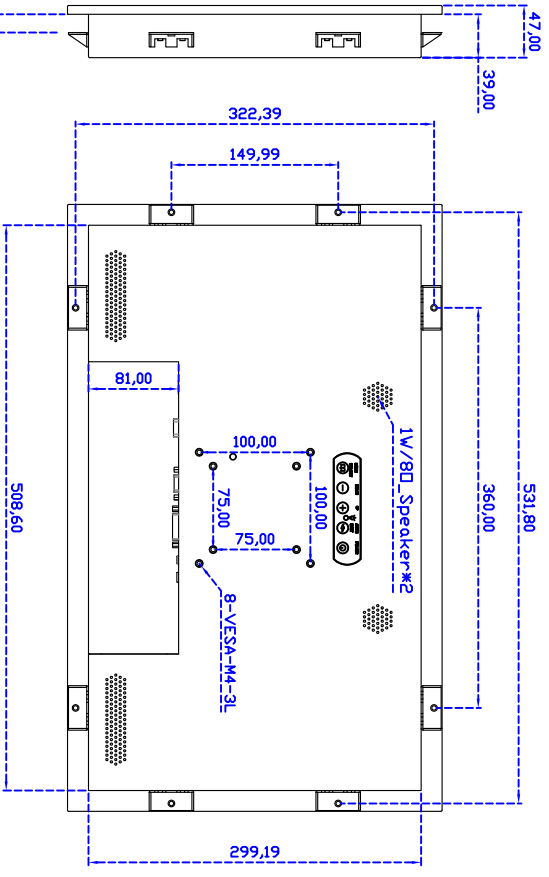
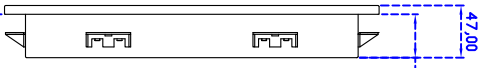
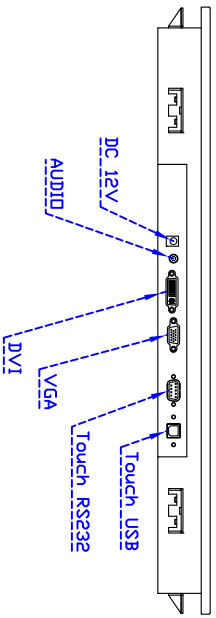
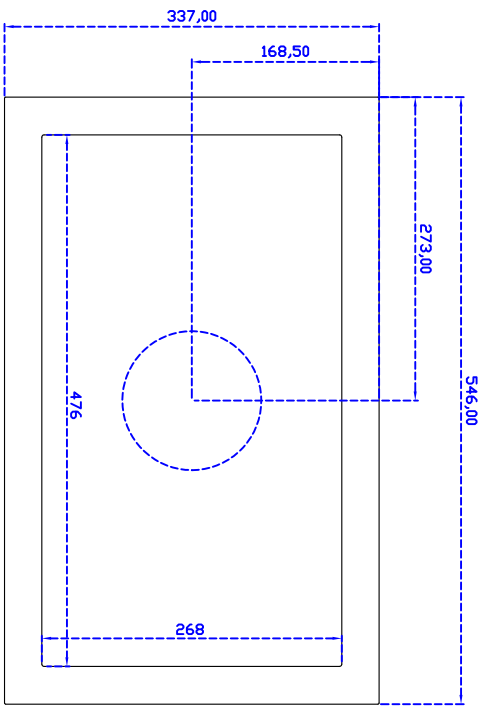
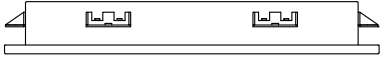
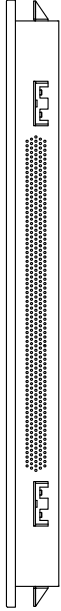
Order information :

| | | | |
|--------------------|---|--------------------|-----------------------------|
| AIM-PM5R215-R21W : | 【VGA/DVI/AUDIO/USB-TOUCH】 | AIM-PM5R215-R22W : | 【VGA/DVI/AUDIO/RS232-TOUCH】 |
| Accessory | VGA Cable/AC90~260V Adapter/Power Cable/Audio Cable/USB or RS232 Cable/Touch Pen/ Cleaning wipes/Driver Disk | | ※DVI Cable(Optional) |



3 Year Warranty
LCD Panel 1 Year





Suggested Wall Thickness: 1-16mm

21.5" Embedded Touch Monitor.

AIM-PMxxxxx215-R21W