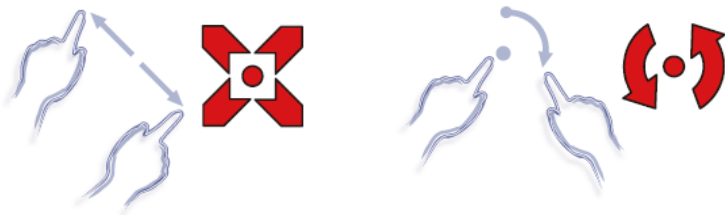
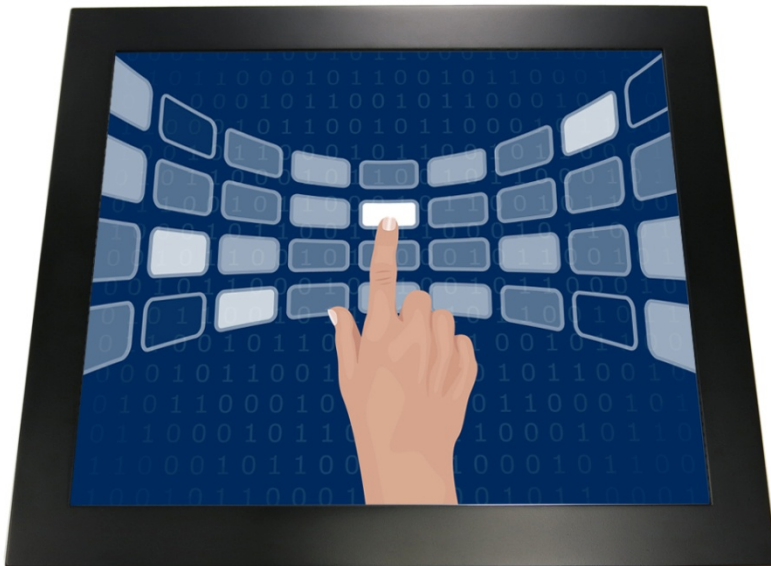
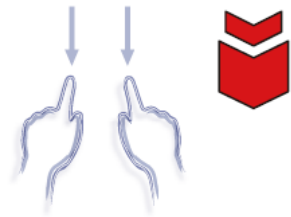


19" inch Embedded Touch Monitor(Projected capacitive Multi-Touch)

Products application :

- POS Terminal
- Industrial PC
- Kiosk
- Gaming
- Medical apparatus
- Personal computer
- Mobile GPS
- Office automation
- Security system of the house
- Car-mounted amusement
- Military equipment
- Communicate



19" inch Embedded Touch Monitor(Projected capacitive Multi-Touch)

Display Specifications :

Active Area	376 × 301 mm
Pixel Pitch	0.294 × 0.294 mm
Brightness	250 cd/m ²
Contrast Ratio	1000 : 1
Resolution	1280 x 1024 (SXGA)
Viewing Angle	L/R 170° ; U/D 160°
Response Time	5 ms (Tr + Tf)
Display Colors	16.7M
Display Modes	640×480 ; 800×600 ; 1024×768 ; 1280×1024
Signal input	VGA ; Audio ; DVI
Mini-Audio out	1W (8Ω) × 2
OSD Keyboard	⊙ Menu/Select ⊙ - ⊙ + ⊙ Auto/Exit ⊙ Power
Power Source	DC 12V ; ≤16w ; Standby ≤1w
Power Consumption	
Storage 、 Operation	-20~60℃ ; 0~50℃
VESA	75×75 or 100×100 mm
Casing Colors	Black
Casing Size 、 Weight	449.7 × 374.4 × 43.5 mm ; 5.04 kg (W×H×D)
Carton 、 gross weight	470 × 125 × 410 mm ; 6.7 kg (W×H×D)

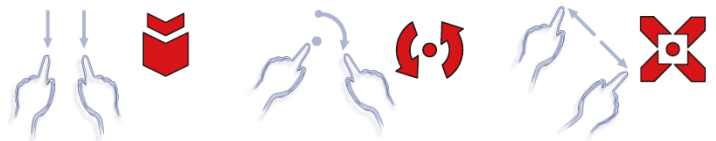


Touch Feature :

Input Method	Capacitive stylus, Finger
Linearity	≤2.5mm
Surface	≥7H
Life Time	Unlimited
Application	Writing and Signature Capture Capability
PC Link	USB or RS232(Single-Touch)

Software Feature :

Draw Test	Position and linearity verification
Controller	Support multiple controllers
Languages	English 、 Simple Chinese 、 Traditional Chinese 、 Japanese 、 French 、 German 、 Spanish 、 Korean 、 Arabic 、 Czech 、 Danish 、 Dutch 、 Greek 、 Hungarian 、 Italian 、 Norwegian 、 Russian 、 Polish 、 Portuguese 、 Slovenian 、 Swedish 、 Thai 、 Turkish
Mouse Emulator	Right / left button emulation. Auto Right / left Click (PDA function)
Touch Style	Drawing a Mode 、 button a Mode 、 Touch Off/ on Switch
Double Click	Configurable double click speed 、 Configurable double click area
Sound Modes	No sound 、 Touch down 、 Touch up
Display Support	display rotation 、 Support multiple monitors
Division Pattern Settings:	Support two halves and four parts with touch function, you can also create your own division patterns.
Edge compensation	Support edge compensation and you can also add your own numbers for it.
Support O.S	All Windows-32 bit O.S Windows7-8-10 ; XP-64 bit O.S Android ; A II Linux ; MAC



Order information :

AIM-PMPCTU190-R21 : 【VGA/AUDIO/DVI/USB-TOUCH】
Accessory

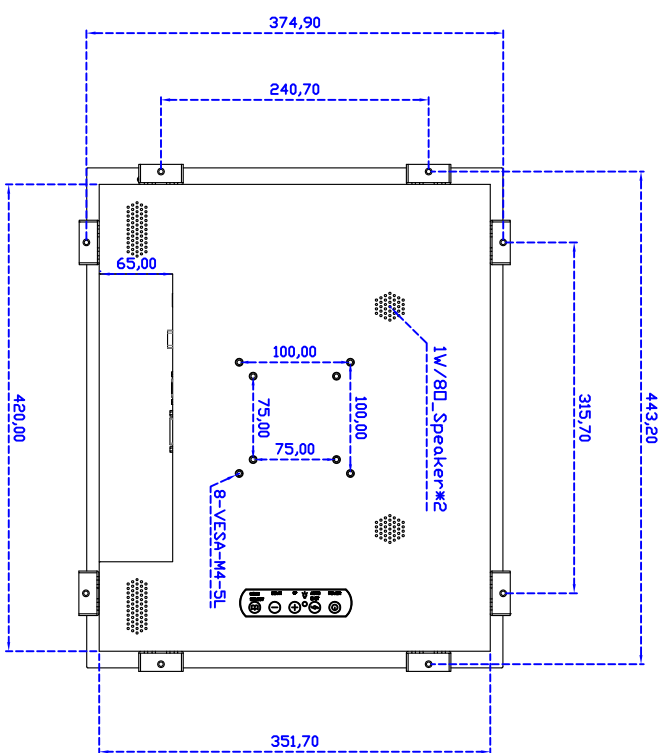
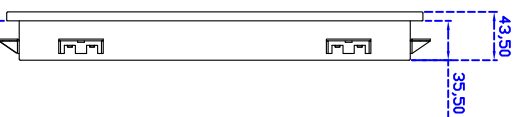
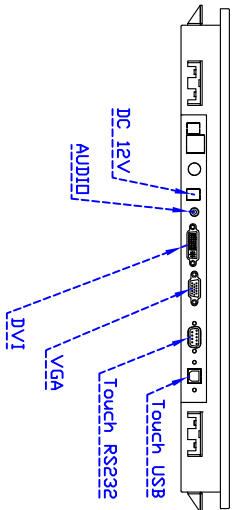
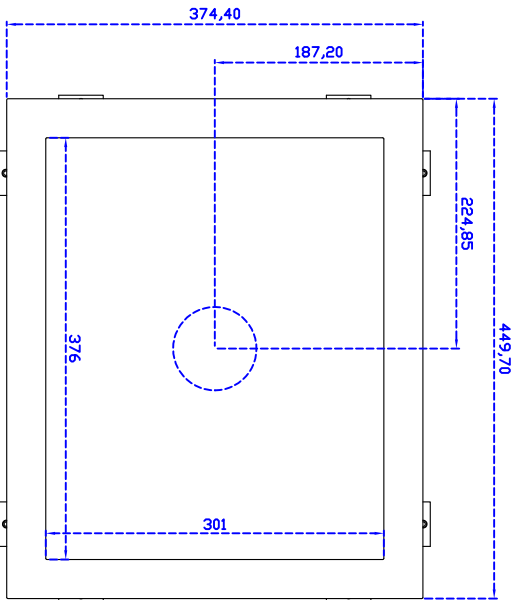
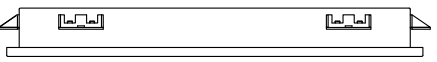
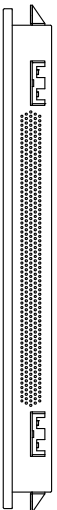
AIM-PMPCTU190-R22 : 【VGA/AUDIO/DVI/RS232-TOUCH】
VGA Cable/AC90~260V Adapter/Power Cable/Audio Cable/USB or RS232 Cable/Cleaning wipes/Driver Disk

※DVI Cable(Optional)



3 Year Warranty
LCD Panel 1 Year





Suggested Wall Thickness ~16mm

19" Embedded Touch Monitor.

AIM-PMxxxxx190-R21