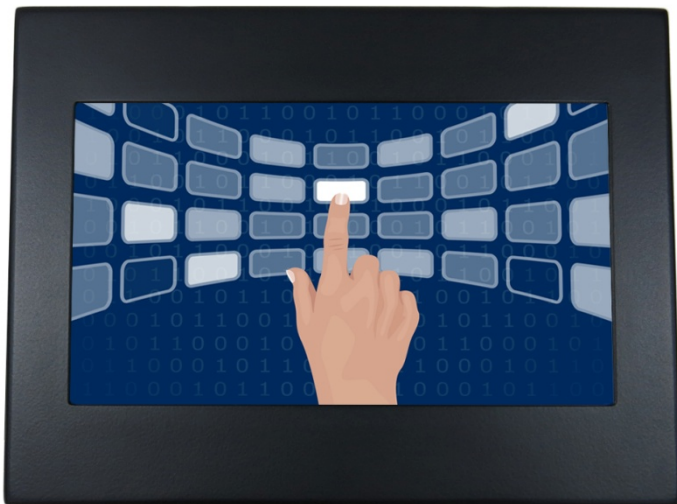


7" inch Embedded Touch Monitor

Products application :

- POS Terminal
- Industrial PC
- Kiosk
- Gaming
- Medical apparatus
- Personal computer
- Mobile GPS
- Office automation
- Security system of the house
- Car-mounted amusement
- Military equipment
- Communicate



7" inch Embedded Touch Monitor

Display Specifications :

| | |
|-----------------------|--|
| Active Area | 154 × 85 mm |
| Pixel Pitch | 0.1506 × 0.1432 mm |
| Brightness | 500 cd/m ² |
| Contrast Ratio | 800 : 1 |
| Resolution | 1024 × 600 (WXGA) |
| Viewing Angle | L/R 150° ; U/D 145° |
| Response Time | 12.5 ms (Tr + Tf) |
| Display Colors | 262K |
| Display Modes | 640×480 ; 800×600 ; 1024×600 |
| Signal input | VGA ; Audio |
| Audio | 1W (8Ω) ×1 |
| OSD Keyboard | ⊙Menu/Select ⊖ ⊕ ⊙Auto/Exit ⊙Power |
| Power Source | DC 12V ; ≤8w ; Standby ≤1w |
| Power Consumption | |
| Storage · Operation | -30~80°C ; -20~70°C |
| VESA | 75×75 mm |
| Casing Colors | Black |
| Casing Size · Weight | 193 × 145 × 38 mm ; 0.9 kg (W×H×D) |
| Carton · gross weight | 315 × 150 × 295 mm ; 2.04 kg (W×H×D) |



Touch Feature :

| | |
|------------------|---|
| Input Method | Finger, gloved hand, or stylus activation |
| Activation Force | ≥ 50g |
| Linearity | ≤ 1.5% |
| Surface | ≥ 3H |
| Life Time | ≥ 35,000,000 |
| Application | Writing and Signature Capture Capability |
| PC Link | USB or RS232 |

Software Feature :

| | |
|------------------|---|
| Calibration | Fast full oriental 4 points position |
| Compensation | Edge compensation. Accuracy 25 points linearity compensation |
| Draw Test | Position and linearity verification |
| Controller | Support multiple controllers |
| Languages | English · Simple Chinese · Traditional Chinese · Japanese · French · German · Spanish · Korean · Arabic · Czech · Danish · Dutch · Greek · Hungarian · Italian · Norwegian · Russian · Polish · Portuguese · Slovenian · Swedish · Thai · Turkish |
| Mouse Emulator | Right / left button emulation. Auto Right / left Click (PDA function) |
| Touch Style | Drawing a Mode · button a Mode · Touch Off/ on Switch |
| Double Click | Configurable double click speed · Configurable double click area |
| Sound Modes | No sound · Touch down · Touch up |
| COM Port Support | COM1 ~ COM255 for Windows and Linux COM1 ~ COM8 for MS- DOS |
| Display Support | display rotation · Support multiple monitors |
| Support O.S | All Windows-32 bit O.S Windows7-8-10 ; XP-64 bit O.S MS-DOS ; A ll Linux ; MAC |

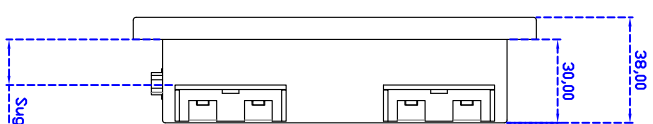
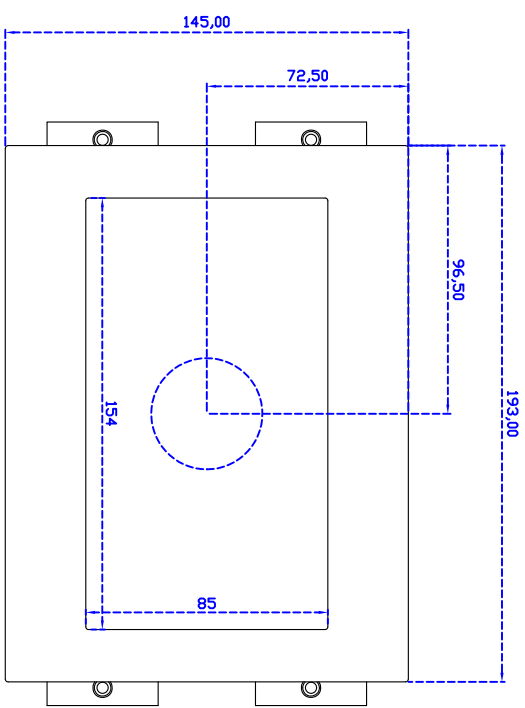
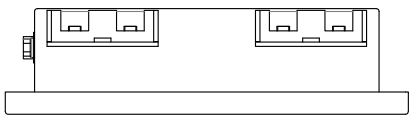
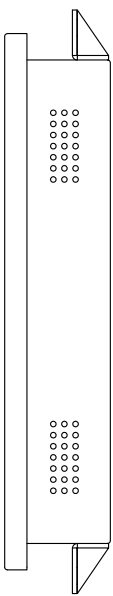
Order information :

| | | | |
|--------------------|---|--------------------|-------------------------|
| AIM-PM5R070-R23W : | 【VGA/AUDIO/USB-TOUCH】 | AIM-PM5R070-R24W : | 【VGA/AUDIO/RS232-TOUCH】 |
| Accessory | VGA Cable/AC90~260V Adapter/Power Cable/USB or RS232 Cable/Audio Cable/Touch Pen/Cleaning wipes/Driver Disk | | |

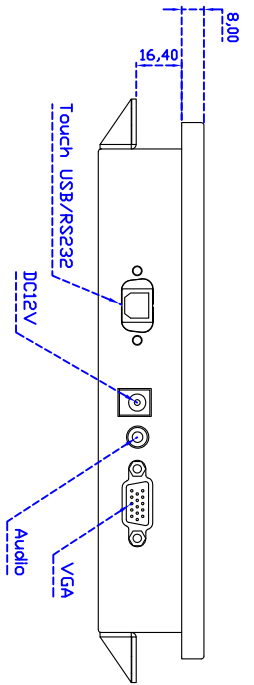
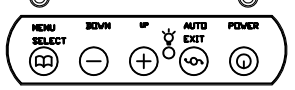
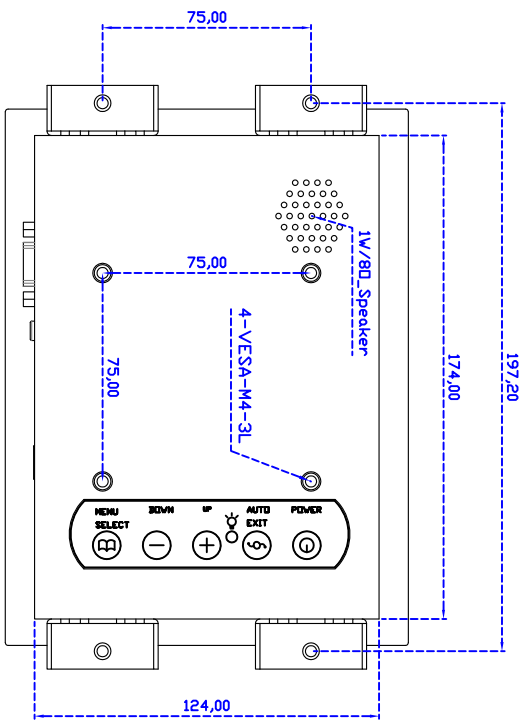


3 Year Warranty
LCD Panel 1 Year





Suggested Wall Thickness: ~16mm



7" Embedded Touch Monitor.

AIM-PMxxxxx070-R21W/R23W