

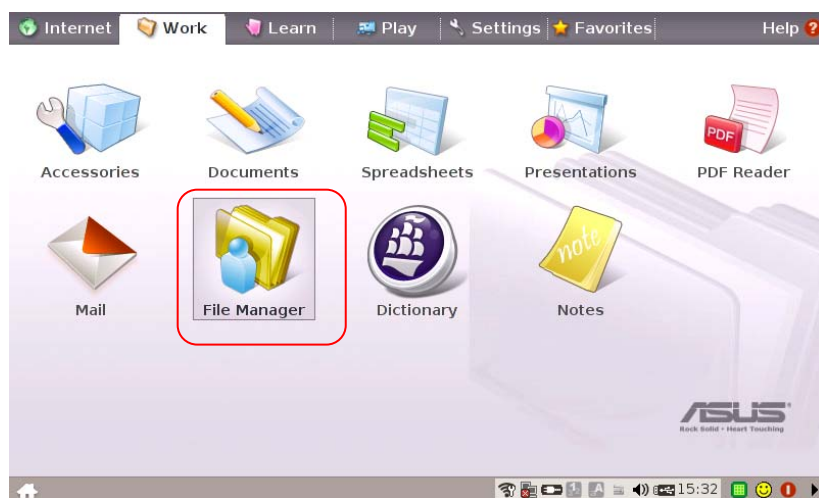


Touch Package User Guide	Model:	AIM-EeePC-7	Rev. No.	Issued Date.	Page.
			3.5	MAY. 27, 08	1 / 6

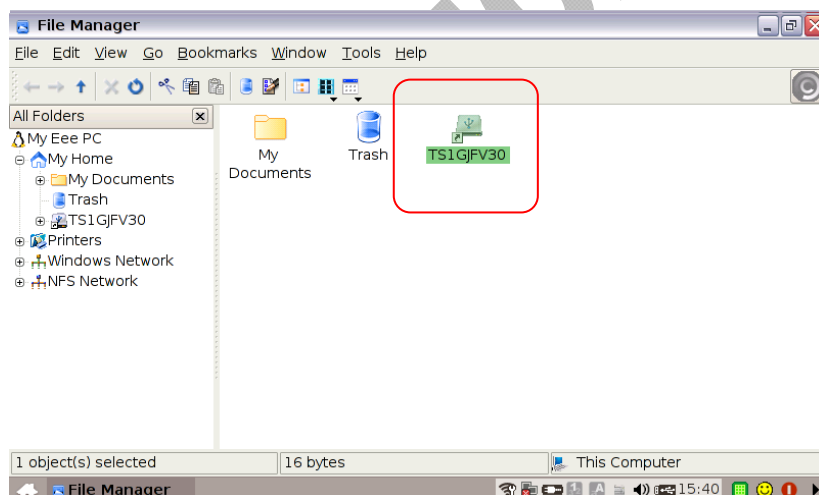
Before installing the driver, please get the jet flash first, to storing the driver to the jet flash; Or download the driver to your EeePC from www.aimtouch.com.tw (The persons who download the driver from the network are star from the 4th point.)

在安裝驅動程式前，請先準備好隨身碟，至可讀取本公司所附驅動程式光碟片的電腦中將驅動程式儲存至隨身碟；或至本公司網站 www.aimtouch.com.tw 親自下載驅動程式至您的 EeePC 的 My documents 資料夾下。（從網路下載驅動程式者請從第 4 點開始執行）

1. 請點選工作／檔案管理員。Please click the Work / File manager.



2. 請點選隨身碟並開啓。Please click the jet flash disc and click it.

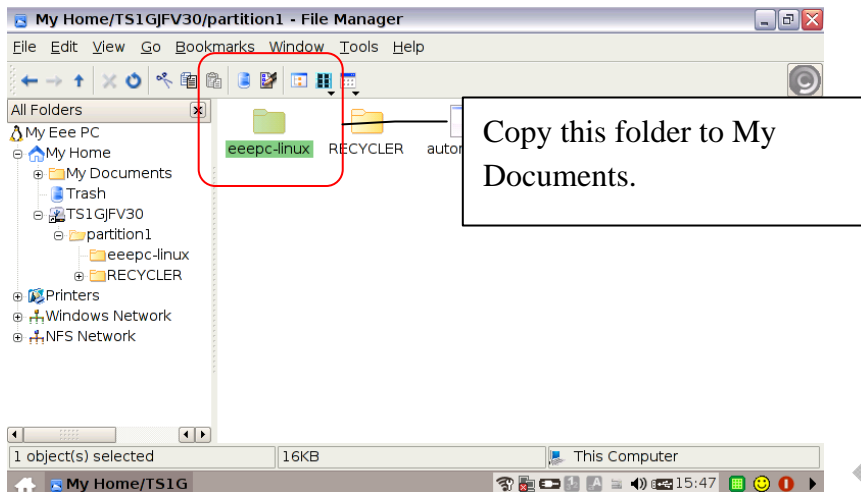


3. 開啓後會看見剛剛從驅動程式光碟片中複製的資料夾（eeepc-linux），請再複製此資料夾至 My Documents 資料夾下。



Touch Package User Guide	Model:	AIM-EeePC-7	Rev. No.	Issued Date.	Page.
			3.5	MAY. 27, 08	2 / 6

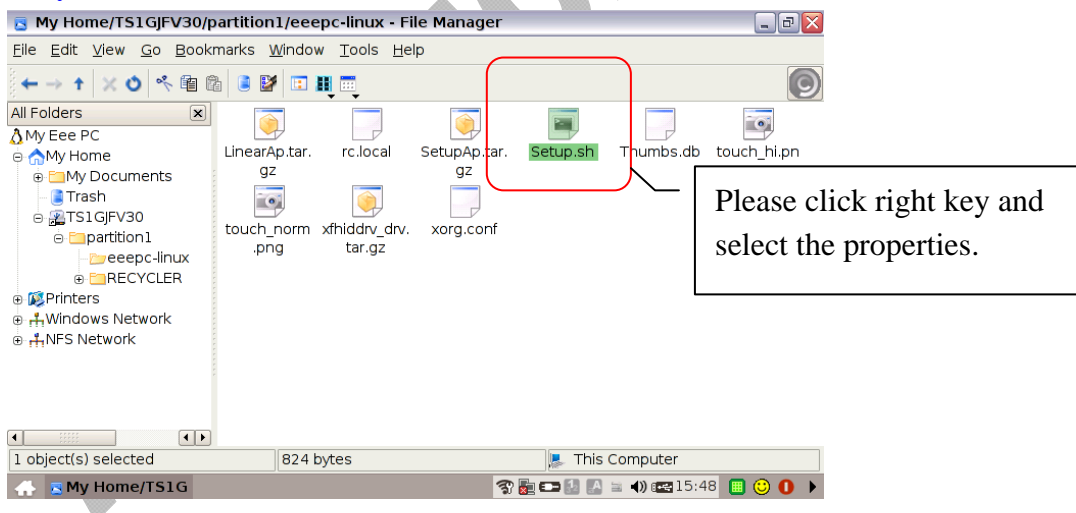
Will see the folder copied from the driver (eeepc-linux), Please copy this folder to My Documents folder .



4.開啓 eeepc-linux 資料夾找尋一個檔名：Setup.sh 後請按右鍵選擇內容。
(從網路下載驅動程式者請從第 4 點開始跟著步驟執行)

Click eeepc-linux folder and look for a file called Setup.sh. Please press the right key and choose the Properties.

(The persons who download the driver from the network , please Click and begin to follow the step to carry out)

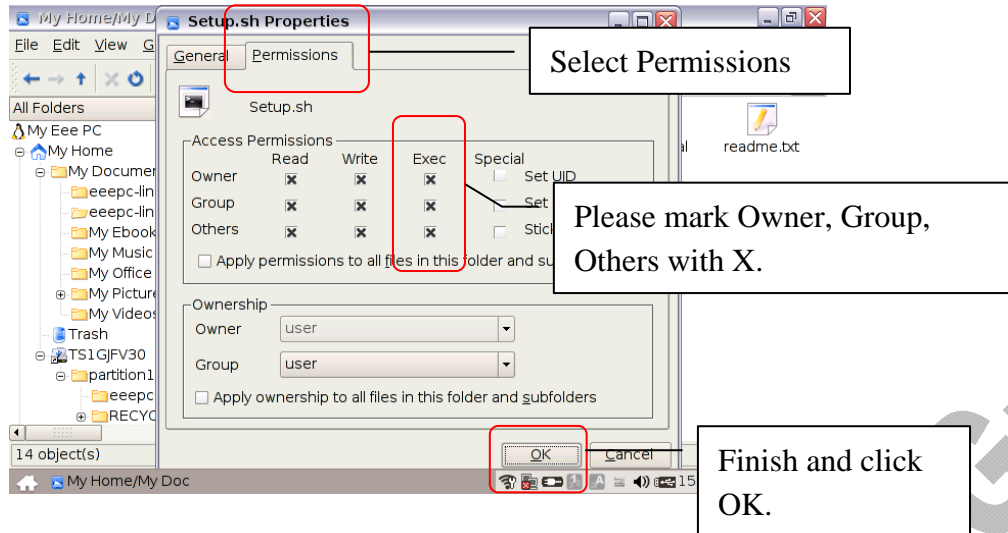


5.到權限將執行下的所有者、群組、其他都打 × 後並按下確定。

Get Permissions and mark Owner, Group, Others with X then click OK.



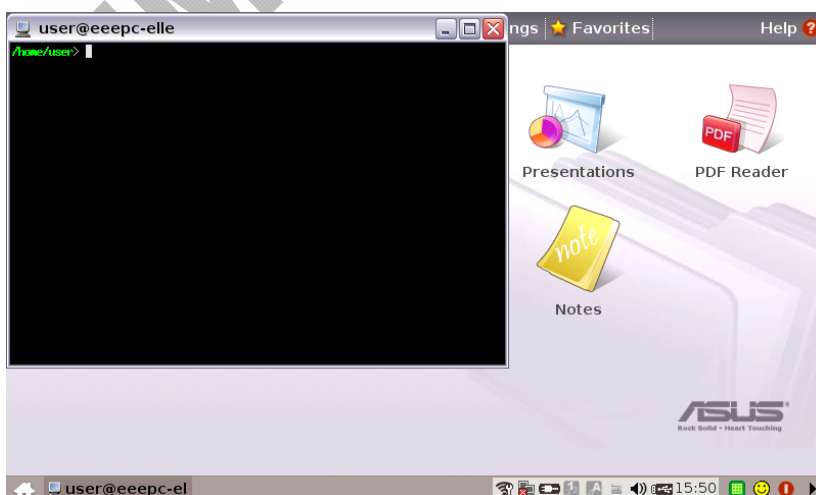
Touch Package User Guide	Model:	AIM-EeePC-7	Rev. No.	Issued Date.	Page.
			3.5	MAY. 27, 08	3 / 6



6. 結束後，請回到我的首頁並按下 **Ctrl + Alt + T** 喚出 Linux。
After finishing, please get back to my home and push **Ctrl + Alt + T** to call out Linux.



請先回至我的首頁畫面中執行
Ctrl + Alt + T 喚出 Linux。
Please go back to my home and
push **Ctrl + Alt + T** calls out Linux.



按完 **Ctrl + Alt + T** 後會出現左圖
的黑色畫面(Linux)。
When you call out the Linux, it will
be appear block window like the left
picture.

hout notice.
,LTD.



Touch Package User Guide	Model:	AIM-EeePC-7	Rev. No.	Issued Date.	Page.
			3.5	MAY. 27, 08	4 / 6

7.

第一行請輸入：`sudo echo 1 > /proc/acpi/asus/camera`

指令用意：打開攝影機的電源（因為觸控板與攝影機並連）

On first line please input：`sudo echo 1 > /proc/acpi/asus/camera`.

第二行請輸入：`cd My\ Documents/`

指令用意：變換工作目錄至 My Documents。（請注意英文大小寫，該大寫要輸入大寫）

On second line please input：`cd My\ Documents/`

(please pay attention to English capital and small letter, should capitalize and want introduction to capitalize)

第三行請輸入：`cd eeepc-linux/`

指令用意：由 My Documents 再變換工作目錄至 eeepc-linux 下。

On third line please input：`cd eeepc-linux/`

第四行請輸入：`ls`

On four line please input：`ls`

第五行請輸入：`sudo -s`

指令用意：使用者的權限

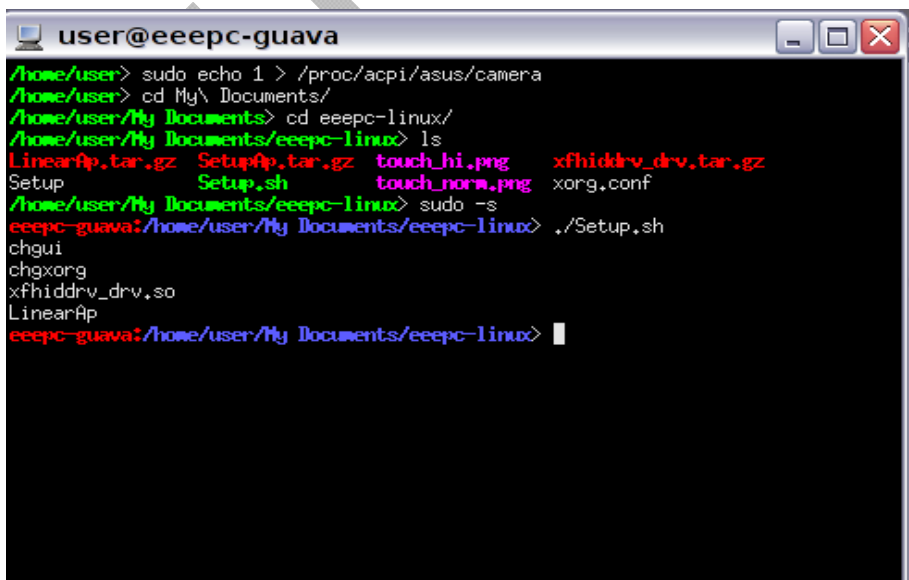
On five line please input：`sudo -s`

第六行請輸入：`./Setup.sh`

指令用意：安裝觸控驅動程式

On six line please input：`./Setup.sh`

最後安裝完成畫面則如下圖所示，成功後請關閉此視窗並重新開機。



```
user@eeepc-guava
/home/user> sudo echo 1 > /proc/acpi/asus/camera
/home/user> cd My\ Documents/
/home/user/My Documents> cd eeepc-linux/
/home/user/My Documents/eeepc-linux> ls
LinearAp.tar.gz  SetupAp.tar.gz  touch_hi.png  xf86ddrv_drv.tar.gz
Setup           Setup.sh        touch_norm.png  xorg.conf
/home/user/My Documents/eeepc-linux> sudo -s
eeepc-guava:/home/user/My Documents/eeepc-linux> ./Setup.sh
chgui
chgxorg
xf86ddrv_drv.so
LinearAp
eeepc-guava:/home/user/My Documents/eeepc-linux> █
```

The following picture shows finishing finally, please close this window and start the machine again after succeeding.



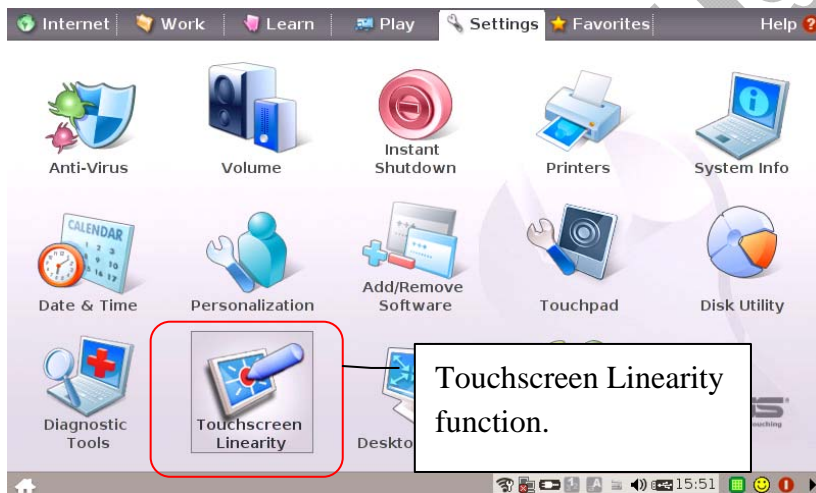
Touch Package User Guide	Model:	AIM-EeePC-7	Rev. No.	Issued Date.	Page.
			3.5	MAY. 27, 08	5 / 6

關閉 Linux 後請重新開機。Please restart the machine after closing Linux.



8.重新開機後會發現多了一項 Touchscreen Linearity 功能，請點選進去執行觸控校正。

Will discover the Touchscreen Linearity function , please click it and use the touch of correcting.

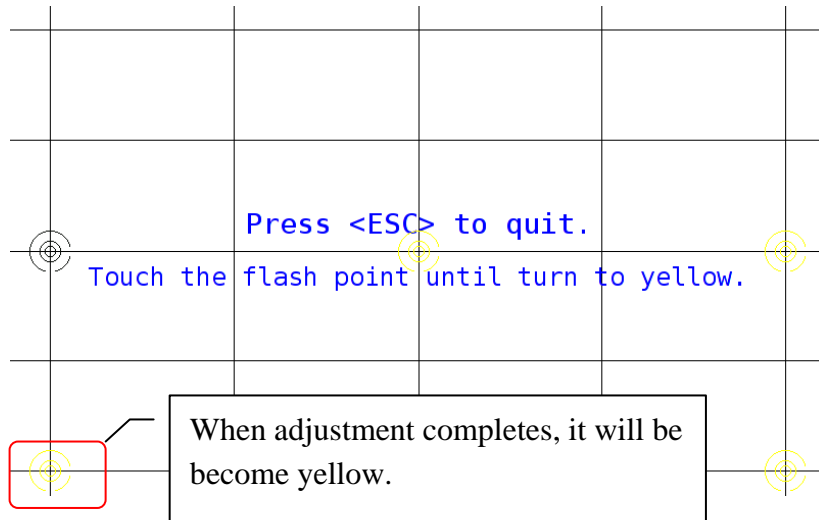


9.進入 Touchscreen Linearity 後，會出現下圖的畫面，請拿觸控筆輕壓閃爍的圓點直到呈現黃色圓點再進行下一點的校正。共有九點需要校正，校正完畢後即整個安裝步驟都完成，接下來您便可以開始使用觸控的功能了。

After entering Touchscreen Linearity, will appear picture as below , please is it is it accuse of pen to be light to is it flash dot of gravel until appear yellow whom dot down a little more correct to pigeonhole to touch to take. Need to correct at nine points in all, namely the whole installation step is finished after finishing correcting, and then you can begin to use touching the function accused of.



Touch Package User Guide	Model:	AIM-EeePC-7	Rev. No.	Issued Date.	Page.
			3.5	MAY. 27, 08	6 / 6



AIM TOUCH User Guide