

21.5" inch Embedded Touch Monitor

Products application :

- POS Terminal
- Industrial PC
- Kiosk
- Gaming
- Medical apparatus
- Personal computer
- Mobile GPS
- Office automation
- Security system of the house
- Car-mounted amusement
- Military equipment
- Communicate



21.5" inch Embedded Touch Monitor

Display Specifications :

Active Area	476 × 268 mm
Pixel Pitch	0.24825 × 0.24825 mm
Brightness	250 cd/m ²
Contrast Ratio	3000 : 1
Resolution	1920 x 1080 (Full HD)
Viewing Angle	L/R 178° ; U/D 178°
Response Time	18 ms (Tr + Tf)
Display Colors	16.7M
Display Modes	640×480 ; 800×600 ; 1024×768 ; 1280×720 ; 1280×800 ; 1280×1024 ; 1366×768 ; 1440×900 ; 1680×1050 ; 1920×1080
Signal input	15 Pin D_Sub ; DVI ; Mini-Audio in
Mini-Audio out	1W (8Ω) × 2
OSD Keyboard	⊙ Menu/Select ⊙ - ⊙ + ⊙ Auto/Exit ⊙ Power
Power Source	DC 12V ; ≤20w ; Standby ≤1w
Power Consumption	
Storage	-20~60°C ; 0~50°C
Operation	
VESA	75×75 or 100×100 mm
Casing Colors	Black
Casing Size	546 × 337 × 47 mm ; 5.5 kg (W×H×D)
Weight	
Carton	600 × 205 × 50 mm ; 7.45 kg (W×H×D)
gross weight	



Touch Feature :

Input Method	Finger, gloved hand, or stylus activation
Activation Force	≥ 50g
Linearity	≤ 1.5%
Surface	≥ 3H
Life Time	≥ 35,000,000
Application	Writing and Signature Capture Capability
PC Link	USB or RS232

Software Feature :

Calibration	Fast full oriental 4 points position
Compensation	Edge compensation. Accuracy 25 points linearity compensation
Draw Test	Position and linearity verification
Controller	Support multiple controllers
Languages	English · Simple Chinese · Traditional Chinese · Japanese · French · German · Spanish · Korean · Arabic · Czech · Danish · Dutch · Greek · Hungarian · Italian · Norwegian · Russian · Polish · Portuguese · Slovenian · Swedish · Thai · Turkish
Mouse Emulator	Right / left button emulation. Auto Right / left Click (PDA function)
Touch Style	Drawing a Mode · button a Mode · Touch Off/ on Switch
Double Click	Configurable double click speed · Configurable double click area
Sound Modes	No sound · Touch down · Touch up
COM Port Support	COM1 ~ COM255 for Windows and Linux COM1 ~ COM8 for MS- DOS
Display Support	display rotation · Support multiple monitors
Support O.S	All Windows-32 bit O.S Windows7-8-10 ; XP-64 bit O.S MS-DOS ; All Linux ; MAC

Order information :

AIM-PM5R215-R21W : 【VGA/DVI/AUDIO/USB-TOUCH】

AIM-PM5R215-R22W : 【VGA/DVI/AUDIO/RS232-TOUCH】

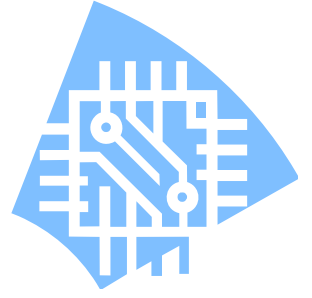
Accessory

VGA Cable/AC90~260V Adapter/Power Cable/Audio Cable/USB or RS232 Cable/Touch Pen/

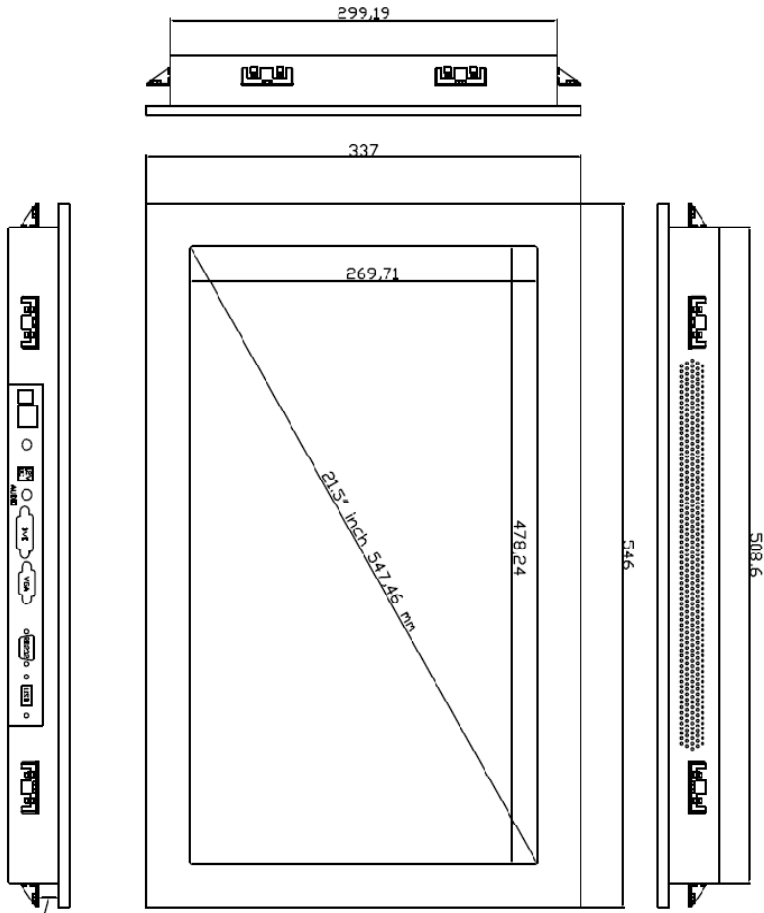
Cleaning wipes/Driver Disk※DVI Cable(Optional)



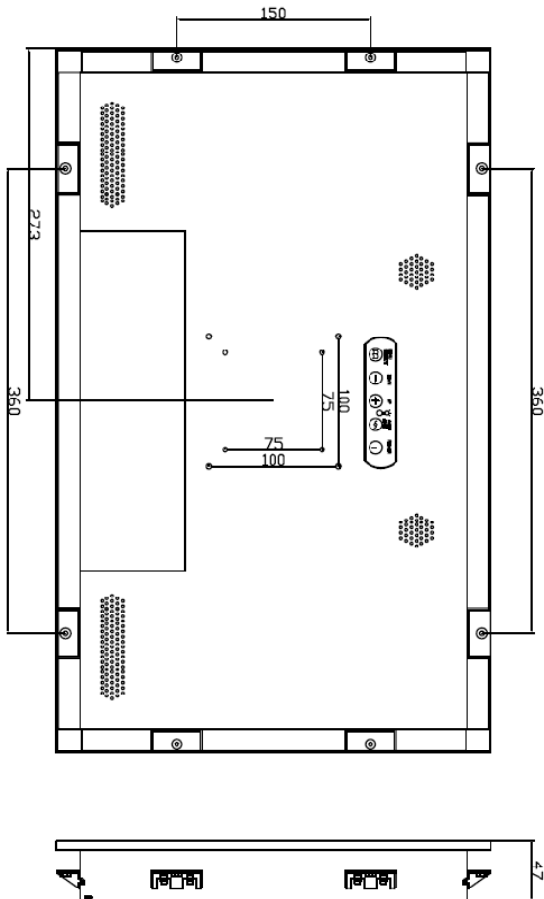
Dimensions :



AIM-PMSR215-R21W(DIM)



Suggested Wall Thickness~16mm



Unit:mm

NOTE
ALL DIMENSIONS ARE IN MILL METERS