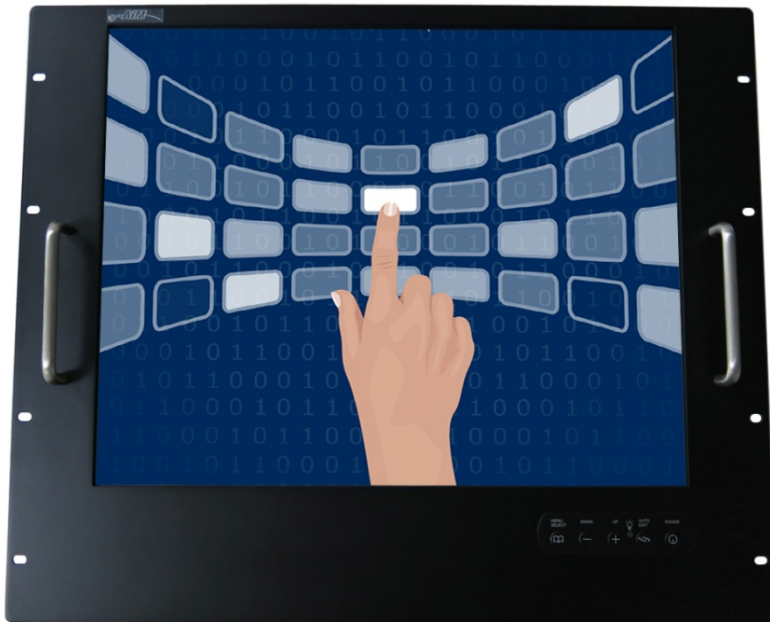


19" inch Embedded Touch Monitor (9U Rack Mount)

Products application :

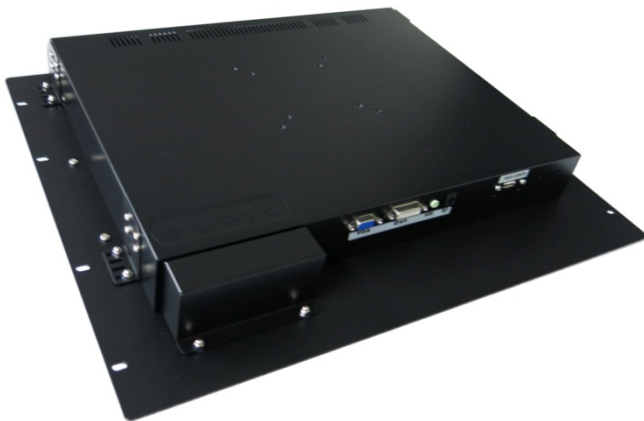
- Rack Mount
- Industrial PC
- Kiosk
- Medical apparatus
- Military equipment
- Communicate



19" inch Embedded Touch Monitor (9U Rack Mount)

Display Specifications :

Active Area	376 × 301 mm
Pixel Pitch	0.294 × 0.294 mm
Brightness	250 cd/m ²
Contrast Ratio	1000 : 1
Resolution	1280 x 1024 (SXGA)
Viewing Angle	L/R 170° ; U/D 160°
Response Time	5 ms (Tr + Tf)
Display Colors	16.7M
Display Modes	640×480 ; 800×600 ; 1024×768 ; 1280×1024
Signal input	15 Pin D_Sub ; Mini-Audio in ; DVI
Mini-Audio out	1W (8Ω) × 2
OSD Keyboard	⊙ Menu/Select ⊙ - ⊙ + ⊙ Auto/Exit ⊙ Power
Power Source	DC 12V ; ≤16w ; Standby ≤1w
Power Consumption	
Storage · Operation	-20~60°C ; 0~50°C
VESA	75×75 or 100×100 mm
Casing Colors	Black
Casing Size · Weight	482 × 399 × 52 mm ; 7 kg (W×H×D)
Carton · gross weight	600 × 500 × 200 mm ; 8.5 kg (W×H×D)



Touch Feature :

Input Method	Finger, gloved hand, or stylus activation
Activation Force	≥ 50g
Linearity	≤ 1.5%
Surface	≥ 3H
Life Time	≥ 35,000,000
Application	Writing and Signature Capture Capability
PC Link	USB or RS232

Software Feature :

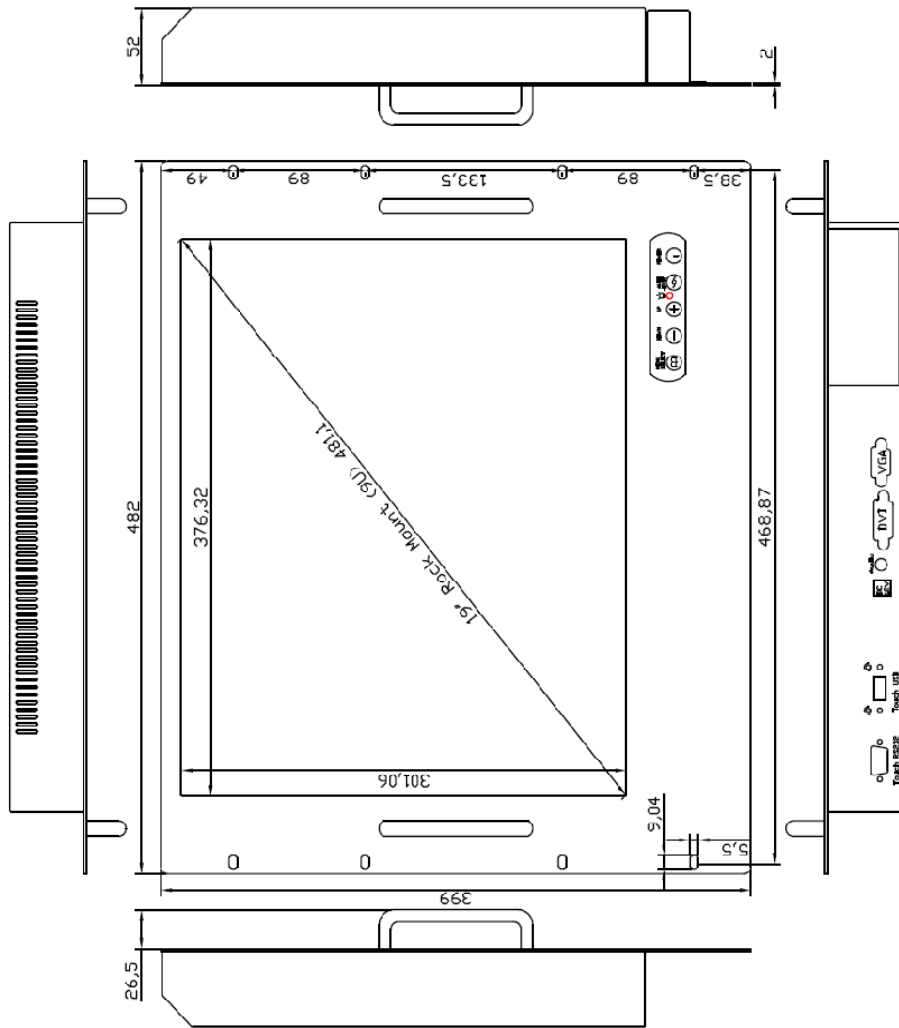
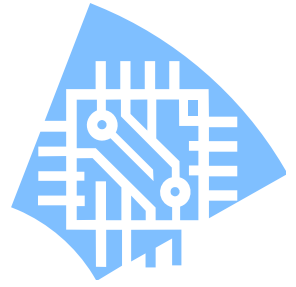
Calibration	Fast full oriental 4 points position
Compensation	Edge compensation. Accuracy 25 points linearity compensation
Draw Test	Position and linearity verification
Controller	Support multiple controllers
Languages	English · Simple Chinese · Traditional Chinese · Japanese · French · German · Spanish · Korean · Arabic · Czech · Danish · Dutch · Greek · Hungarian · Italian · Norwegian · Russian · Polish · Portuguese · Slovenian · Swedish · Thai · Turkish
Mouse Emulator	Right / left button emulation. Auto Right / left Click (PDA function)
Touch Style	Drawing a Mode · button a Mode · Touch Off/ on Switch
Double Click	Configurable double click speed · Configurable double click area
Sound Modes	No sound · Touch down · Touch up
COM Port Support	COM1 ~ COM255 for Windows and Linux COM1 ~ COM8 for MS- DOS
Display Support	display rotation · Support multiple monitors
Support O.S	All Windows-32 bit O.S Windows7-8-10 ; XP-64 bit O.S MS-DOS ; A ll Linux ; MAC

Order information :

AIM-RM5R190-R01 :	【VGA/AUDIO/DVI/USB-TOUCH】	AIM-RM5R190-R02 :	【VGA/AUDIO/DVI/RS232-TOUCH】
Accessory	VGA Cable/AC90~260V Adapter/Power Cable/Audio Cable/USB or RS232 Cable/Touch Pen/ Cleaning wipes/Driver Disk		
	※DVI Cable(Optional)		



Dimensions :



AIM-RM5R190-R01(DIM)

