

10.4" inch Embedded Touch Monitor

Products application :

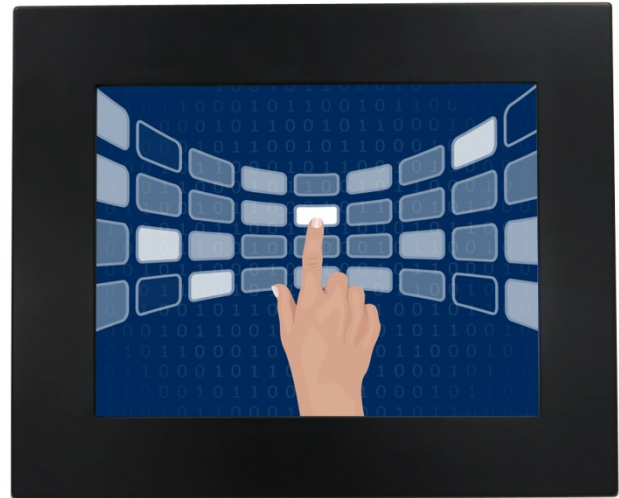
- POS Terminal
- Industrial PC
- Kiosk
- Gaming
- Medical apparatus
- Personal computer
- Mobile GPS
- Office automation
- Security system of the house
- Car-mounted amusement
- Military equipment
- Communicate



10.4" inch Embedded Touch Monitor

Display Specifications :

Active Area	211 × 158 mm
Pixel Pitch	0.20625 × 0.20625 mm
Brightness	400 cd/m ²
Contrast Ratio	500 : 1
Resolution	1024 x 768 (XGA)
Viewing Angle	L/R 140° ; U/D 120°
Response Time	25 ms (Tr + Tf)
Display Colors	262K
Display Modes	640×480 ; 800×600 ; 1024×768
Signal input	15 Pin D_Sub ; Mini-Audio in ; DVI
Mini-Audio out	1W (8Ω) × 2
OSD Keyboard	⊙Menu/Select ⊖ ⊕ ⊙Auto/Exit ⊙Power
Power Source	DC 12V ; ≤9w ; Standby ≤1w
Power Consumption	
Storage · Operation	-30~80°C ; -20~70°C
VESA	75×75 or 100×100 mm
Casing Colors	Black
Casing Size · Weight	290.2 × 237.64 × 42 mm ; 1.85kg (W×H×D)
Carton · gross weight	315 × 150 × 295 mm ; 3.19kg (W×H×D)



Touch Feature :

Input Method	Finger, gloved hand, or stylus activation
Activation Force	≥ 50g
Linearity	≤ 1.5%
Surface	≥ 3H
Life Time	≥ 35,000,000
Application	Writing and Signature Capture Capability
PC Link	USB or RS232

Software Feature :

Calibration	Fast full oriental 4 points position
Compensation	Edge compensation. Accuracy 25 points linearity compensation
Draw Test	Position and linearity verification
Controller	Support multiple controllers
Languages	English · Simple Chinese · Traditional Chinese · Japanese · French · German · Spanish · Korean · Arabic · Czech · Danish · Dutch · Greek · Hungarian · Italian · Norwegian · Russian · Polish · Portuguese · Slovenian · Swedish · Thai · Turkish
Mouse Emulator	Right / left button emulation. Auto Right / left Click (PDA function)
Touch Style	Drawing a Mode · button a Mode · Touch Off/ on Switch
Double Click	Configurable double click speed · Configurable double click area
Sound Modes	No sound · Touch down · Touch up
COM Port Support	COM1 ~ COM255 for Windows and Linux COM1 ~ COM8 for MS- DOS
Display Support	display rotation · Support multiple monitors
Support O.S	All Windows-32 bit O.S Windows7-8-10 ; XP-64 bit O.S MS-DOS ; All Linux ; MAC

Order information :

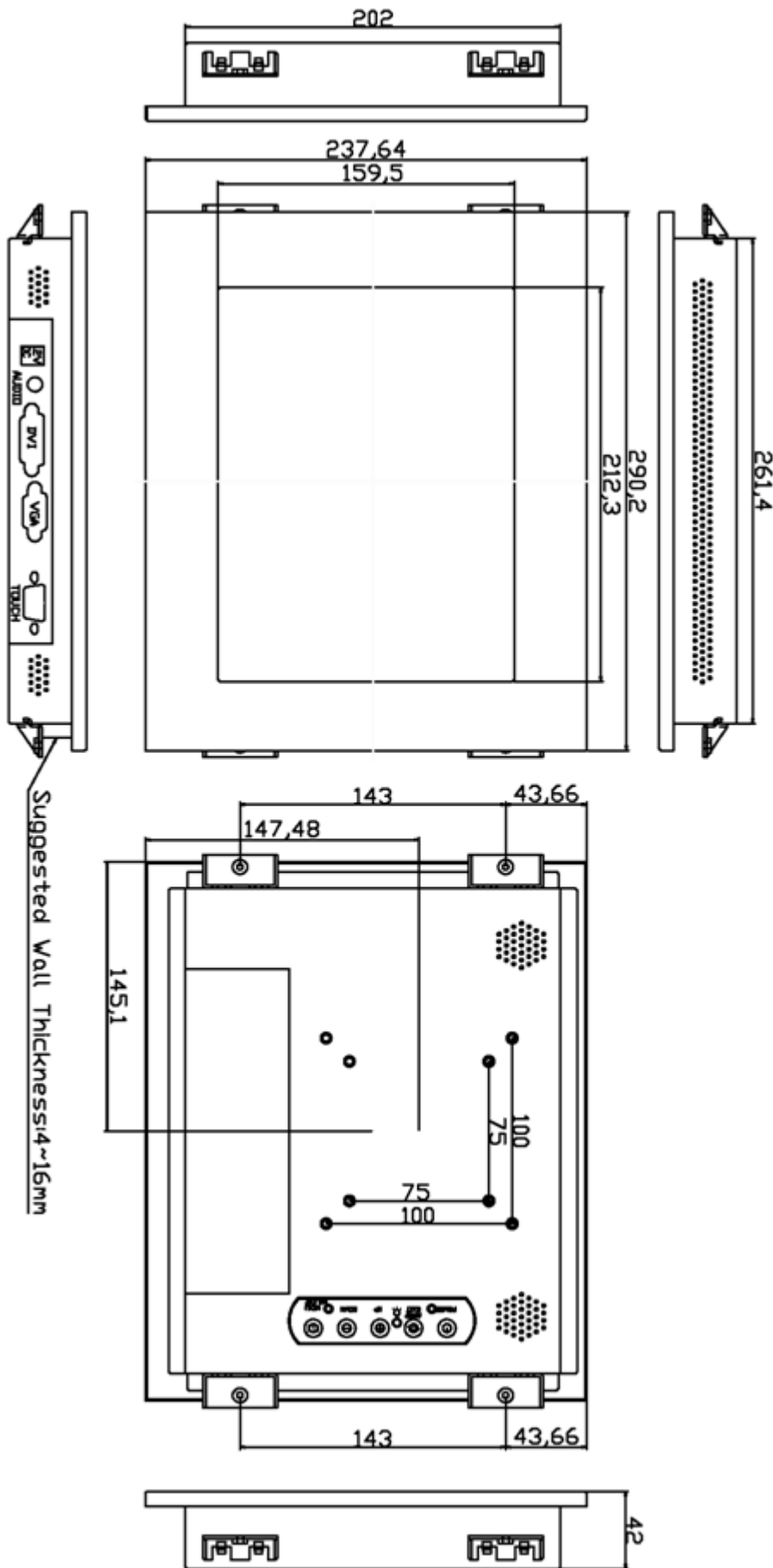
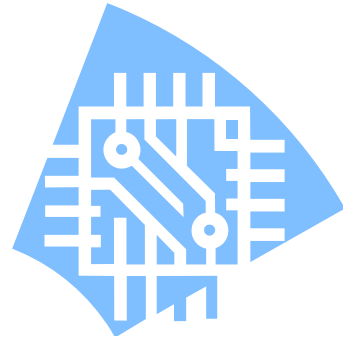
AIM-PM5R104-R21 : Accessory	【VGA/AUDIO/DVI/USB-TOUCH】 VGA Cable/AC90~260V Adapter/Power Cable/Audio Cable/ USB or RS232 Cable/Touch Pen/ Cleaning wipes/Driver Disk ※DVI Cable(Optional)	AIM-PM5R104-R22 : Accessory	【VGA/AUDIO/DVI/RS232-TOUCH】 VGA Cable/AC90~260V Adapter/Power Cable/Audio Cable/ RS232 Cable/Touch Pen/ Cleaning wipes/Driver Disk
--------------------------------	--	--------------------------------	--



3 Year Warranty
LCD Panel 1 Year



Dimensions :



Suggested Wall Thickness: 4~16mm

Unit:mm